

Campus-Wide License Management

MathWorks

Agenda

- Linking to the License
 - End User workflow using Portal with MATLAB (Individual)
- Personal Computers
- Shared/Lab Environments
 - Transition existing MATLAB installations
 - MATLAB (Designated Computer)
- Additional License Options
- Resources

Linking to the Individual license

License Center

Licenses | Trials | Users
Contact support

Select a License

Link a License
Export License Data

[Search 1-9 of 9](#)

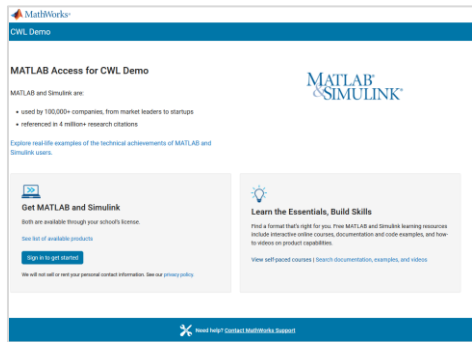
License ▼	Label ↕	Option ↕	Use ↕
41092178	MATLAB (Designated Computer)	Total Headcount	Academic
41092178	MATLAB (Individual)	Total Headcount	Academic
41092178	MATLAB Grader	Total Headcount	Academic
41092178	MATLAB Parallel Server	Total Headcount	Academic
41092178	MATLAB Production Server	Total Headcount	Academic
41092178	MATLAB Web App Server	Total Headcount	Academic
41092178	Online Training Suite	Total Headcount	Academic
41092178	Polyspace (Individual)	Total Headcount	Academic
41092178	RoadRunner (Individual)	Total Headcount	Academic

1-9 of 9

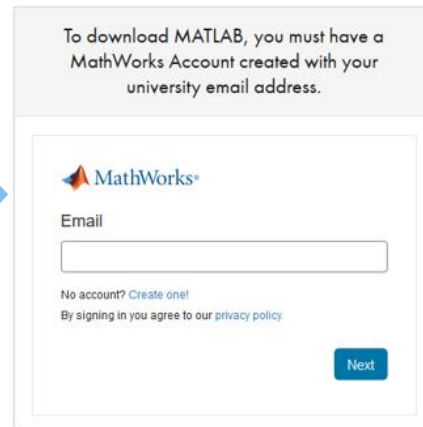
End User Workflow

- User begins by clicking on **Sign in to get started** on the Campus-Wide License Portal

Campus-Wide License Portal



Log in / Create Account



Create Account

To finish creating your profile, provide the following information:

We recommend using a password different from your university account.

Email Address: ✓
You will need to verify your email address

First Name: ✓

Last Name: ✓

Password:

Password Confirmation:

Location:

Department:

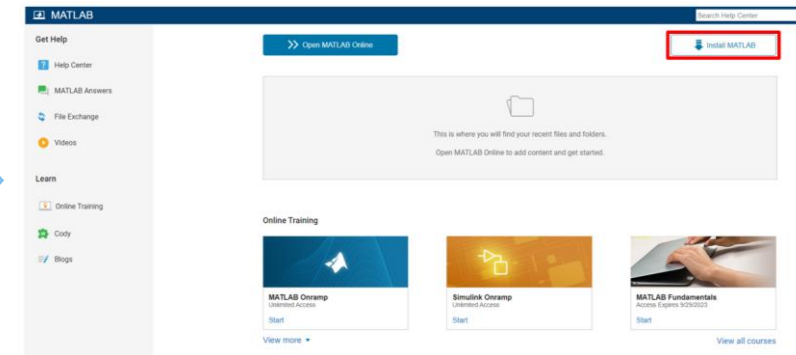
What describes your role?:

School / University:

I accept the Online Services Agreement

We will not sell or rent your personal contact information. See our [privacy policy](#) for details.

MATLAB Home Page



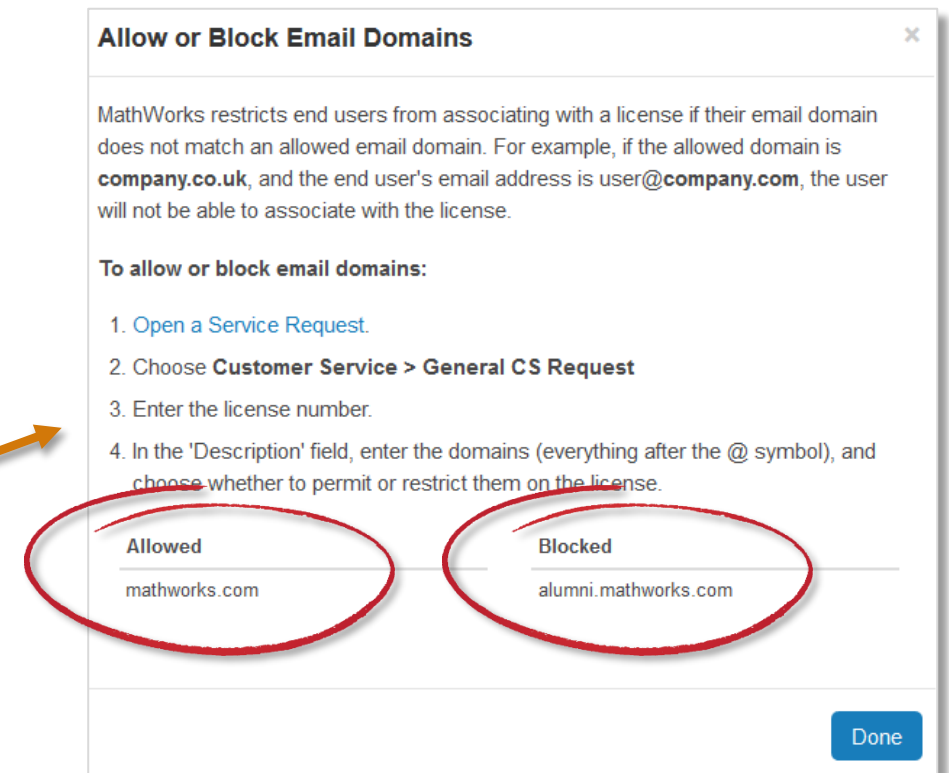
Email Domains

- End Users linking to the Campus-Wide License must use their university email address.
- Email domains for Campus-Wide License Administrators are automatically included in the “Allowed” list.
- Alumni emails can be added to a list of “Blocked” email domains.
 - Contact Customer Support to request updates to email domain list.
- Subdomains of “Allowed” email domains apply as well.
 - For example, if @univ.edu is an allowed email domain, then a user with an @student.univ.edu email address can link to the license.
- Email accounts are re-verified every year from their creation to make sure the account is still valid.

Email Domains

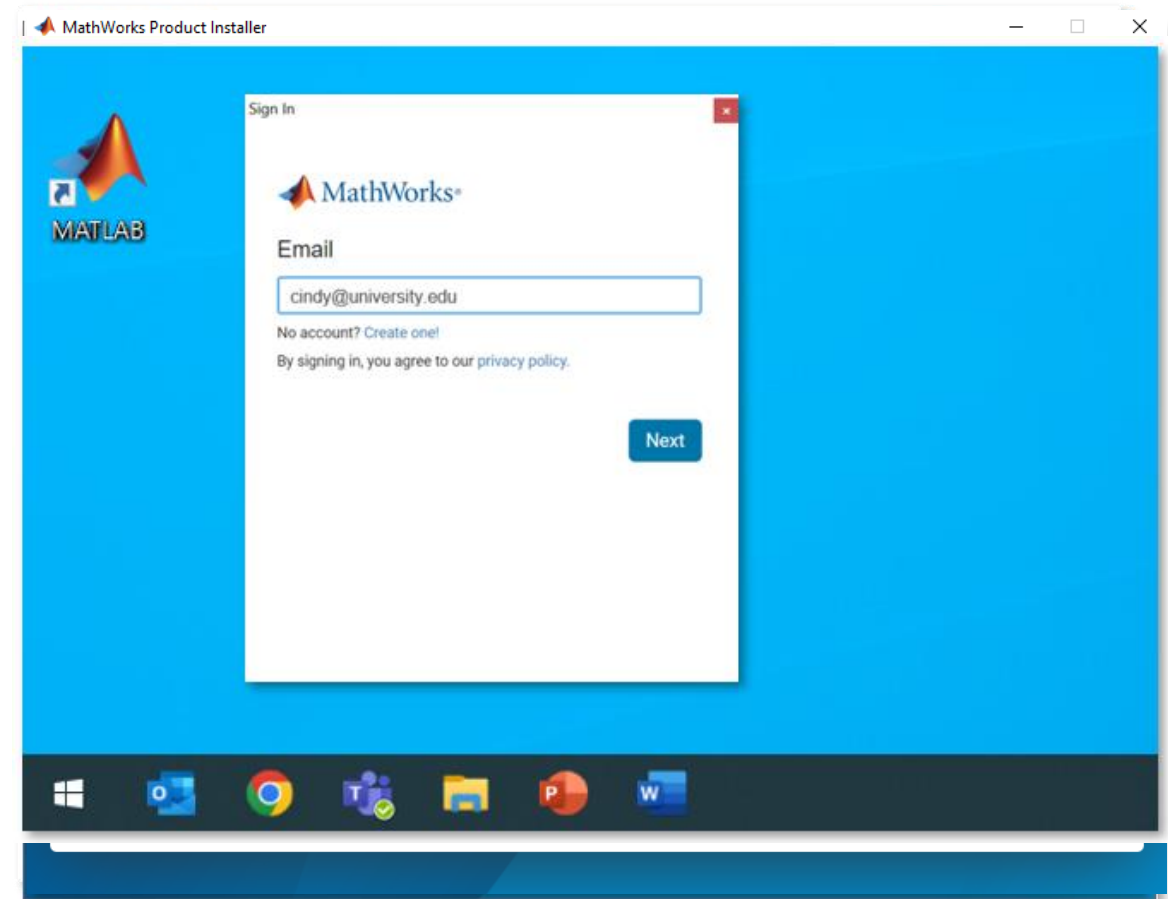
- List of “Allowed/Blocked” email domains is available in the License Center.

- Select **Manage Users** tab
- Click on **Allow or Block Email Domains**



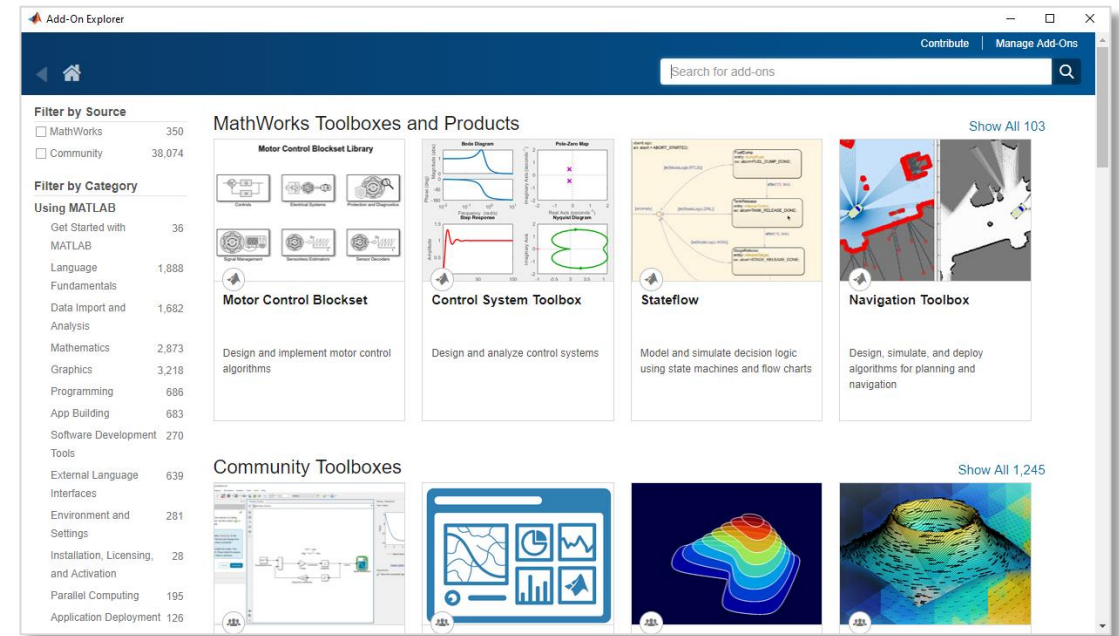
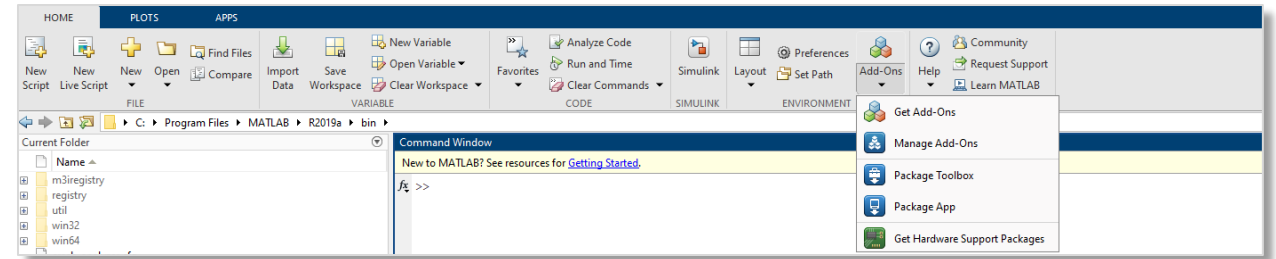
Personal Computer Workflow

- Faculty, Staff, Students, Employees, and Members may install MATLAB on their personal computers:
 1. Select 'Install MATLAB' from the MATLAB Home page
 2. Select 'Download for OS'
 3. Log in with MathWorks Account
 4. Select Products
 5. Select 'Begin Install'
 6. Launch MATLAB



Add-On Explorer

- Allows users to install additional toolboxes & support packages into their existing MATLAB installations.
- Can be launched right from within MATLAB.



Shared/Lab Environments

License Center

Licenses | Trials | Users
Contact support

Select a License

Link a License
Export License Data

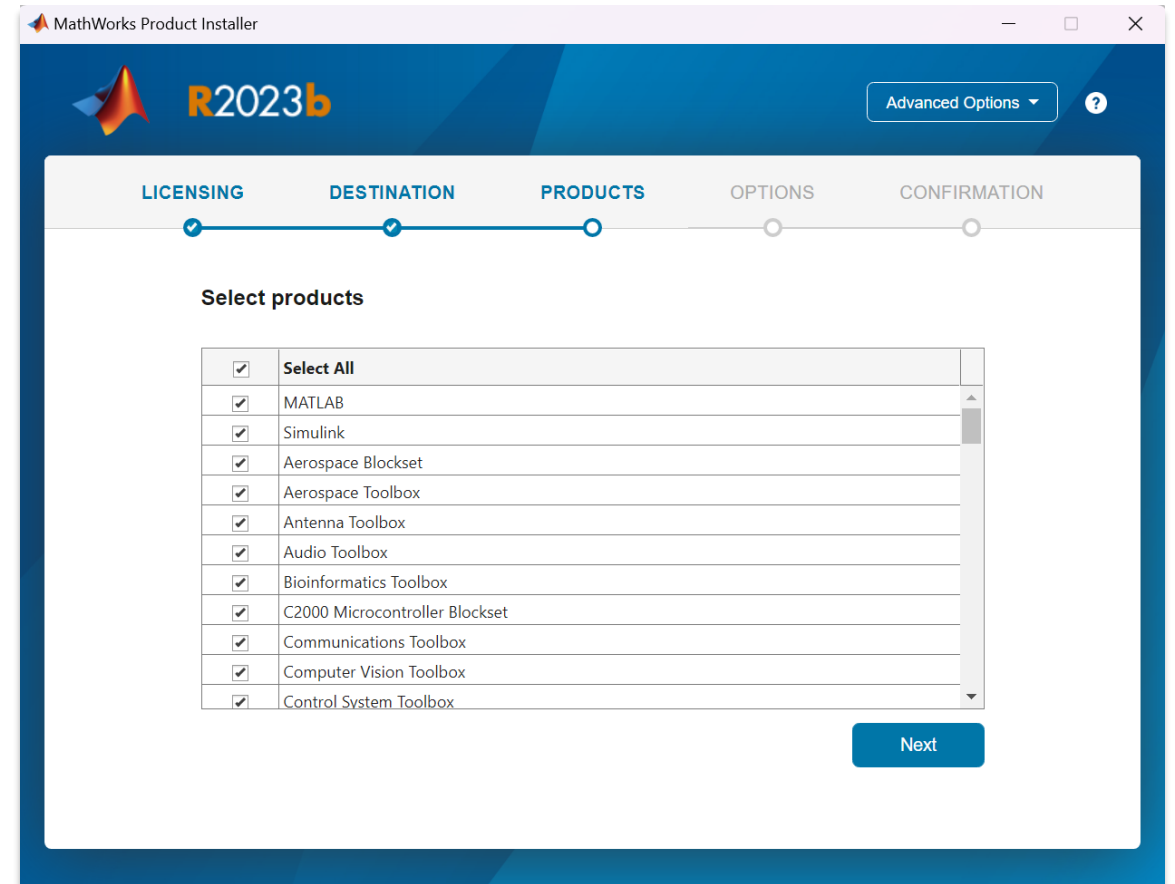
[Search 1-9 of 9](#)

License ▼	Label ↕	Option ↕	Use ↕
41092178	MATLAB (Designated Computer)	Total Headcount	Academic
41092178	MATLAB (Individual)	Total Headcount	Academic
41092178	MATLAB Grader	Total Headcount	Academic
41092178	MATLAB Parallel Server	Total Headcount	Academic
41092178	MATLAB Production Server	Total Headcount	Academic
41092178	MATLAB Web App Server	Total Headcount	Academic
41092178	Online Training Suite	Total Headcount	Academic
41092178	Polyspace (Individual)	Total Headcount	Academic
41092178	RoadRunner (Individual)	Total Headcount	Academic

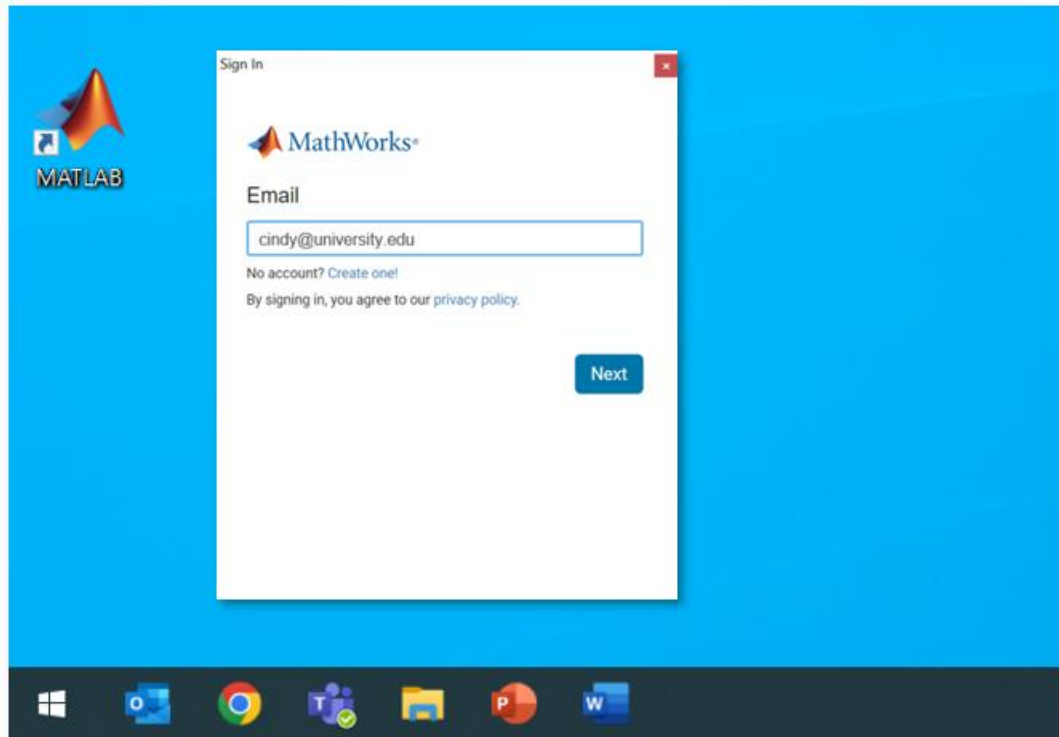
1-9 of 9

Transitioning Existing Shared/Lab MATLAB Installations

- To transition to the Campus-Wide License, install the latest release of MATLAB on shared/lab machines.
 - Uninstall any previous releases
 - Updating all MATLAB installations to the latest release will allow the full benefits of the Campus-Wide License.
- If the latest release of MATLAB is already installed on shared/lab machines, then MATLAB will require a reinstallation.



Launching and Signing into MATLAB on shared/lab machines



- Once MATLAB has been installed, launch by clicking on the desktop icon.
- The user will be asked to sign in with their MathWorks Account the first time.
- The user can work offline without taking any special action, if the license is not expired.

MATLAB (Designated Computer)

Only available for 2 use cases:

- 1) Shared computers with shared OS usernames
- 2) Permanently offline (or air-gapped) computers

License Center

Licenses | Trials | Users Contact support

Select a License Link a License | Export License Data

Search 1-9 of 9

License	Label	Option	Use
41092178	MATLAB (Designated Computer)	Total Headcount	Academic
41092178	MATLAB (Individual)	Total Headcount	Academic
41092178	MATLAB Grader	Total Headcount	Academic
41092178	MATLAB Parallel Server	Total Headcount	Academic
41092178	MATLAB Production Server	Total Headcount	Academic
41092178	MATLAB Web App Server	Total Headcount	Academic
41092178	Online Training Suite	Total Headcount	Academic
41092178	Polyspace (Individual)	Total Headcount	Academic
41092178	RoadRunner (Individual)	Total Headcount	Academic

1-9 of 9

Manage Products | Manage Users | **Install and Activate** | Contact Administrator(s)

Install and Activate Software on a Computer

Recommended Method

STEP 1 Download the installer to the computer you want to activate.

STEP 2 While connected to the Internet, run the installer to download your product files and activate.

[Download Installer](#)

RELATED TASKS

[Activate to Retrieve License File](#)

Expiration Date: 30 Aug 2023

[Advanced Options](#)

More Information can be found in the Quick Start Guide.

Administrator Tasks

- Host a link to the Portal URL on their website
- Request the University email domains be added to the license
- Open the required ports and addresses
- Install latest release of MATLAB on shared/lab machines

Additional License Options

License Center

Licenses | Trials | Users
Contact support

Select a License

Link a License
Export License Data

Search 1-9 of 9

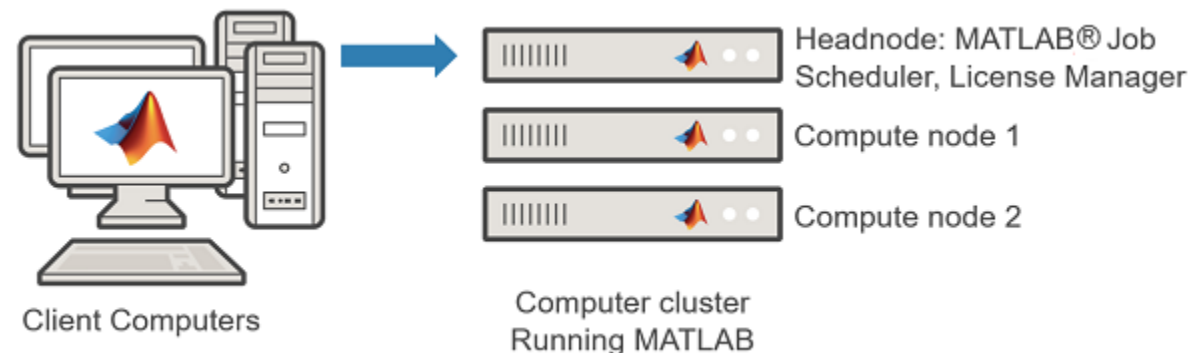
License ▾	Label ⚡	Option ⚡	Use ⚡
41092178	MATLAB (Designated Computer)	Total Headcount	Academic
41092178	MATLAB (Individual)	Total Headcount	Academic
41092178	MATLAB Grader	Total Headcount	Academic
41092178	MATLAB Parallel Server	Total Headcount	Academic
41092178	MATLAB Production Server	Total Headcount	Academic
41092178	MATLAB Web App Server	Total Headcount	Academic
41092178	Online Training Suite	Total Headcount	Academic
41092178	Polyspace (Individual)	Total Headcount	Academic
41092178	RoadRunner (Individual)	Total Headcount	Academic

1-9 of 9

MATLAB Parallel Server (Network License)

- Run computationally intensive MATLAB programs and Simulink models on clusters.
- Run batch jobs remotely so you can use your machine for something else.
- Can be setup on local hardware or on the cloud.
- Able to integrate with existing schedulers if needed.

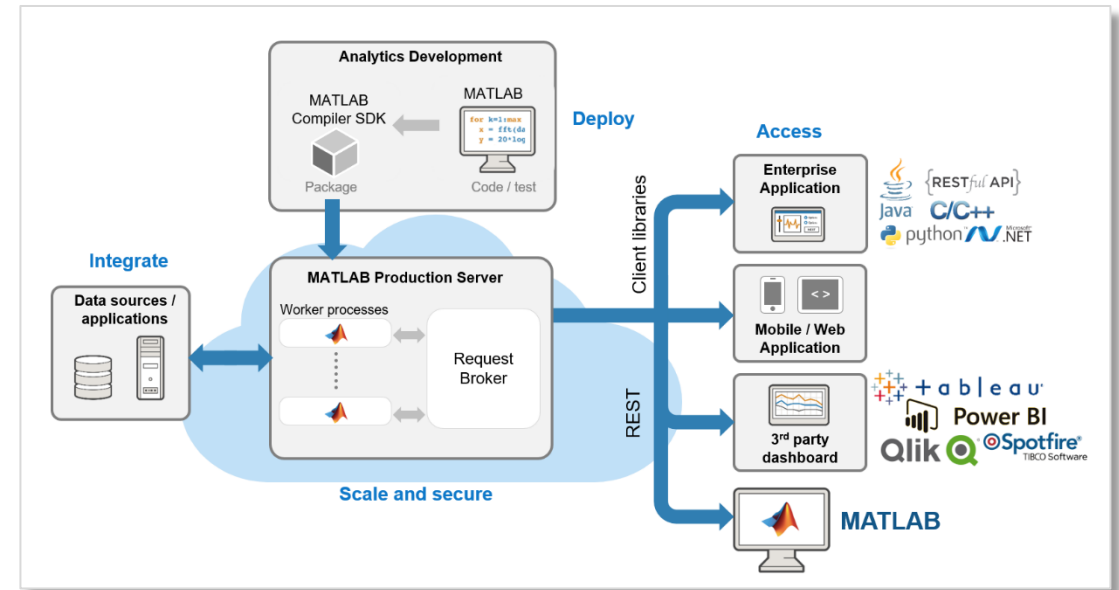
Note: Administrators can add users to this license section to allow usage of these products.



Additional Products (Network License)

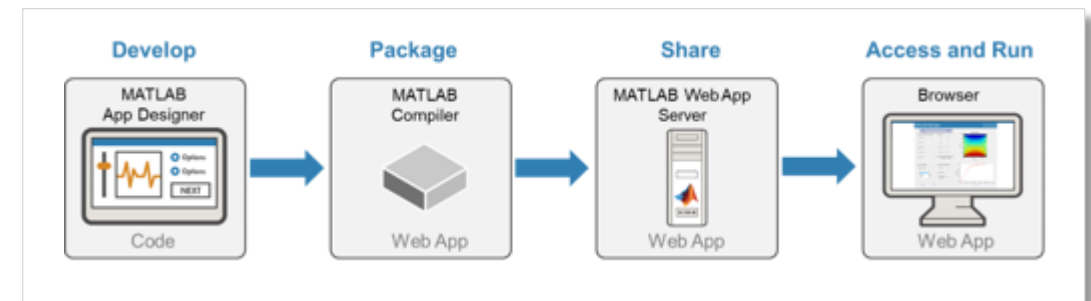
MATLAB Production Server

- Lets you incorporate custom analytics into web, database, and production enterprise applications running on dedicated servers or in the cloud
- Create algorithms in MATLAB, package them using MATLAB Compiler SDK, and then deploy them to MATLAB Production Server without recoding or creating custom infrastructure
- Can scale to support thousands of concurrent requests



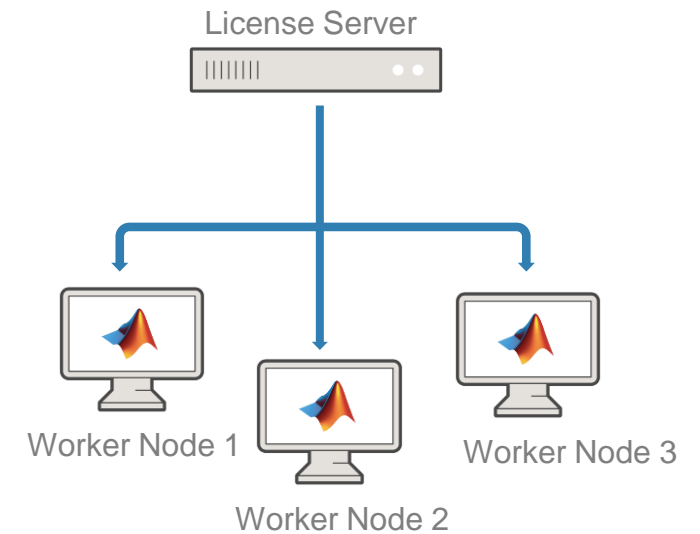
MATLAB Web App Server

- Create and share App Designer based MATLAB apps and Simulink simulations as interactive web apps
- End users run web apps from a browser and do not need MATLAB or Simulink license



Network License Manager

- Install the License Manager on a server, then install additional products on the intended client machines.
 - MATLAB Parallel Server, MATLAB Production Server, MATLAB Web App Server
- When users access the network product, the client machines contact the license manager over the network to checkout a license key.
- If a Concurrent License server is in use for these additional products, simply re-activate to the Campus-Wide License, swap the license files and copy over the SERVER & DAEMON line.



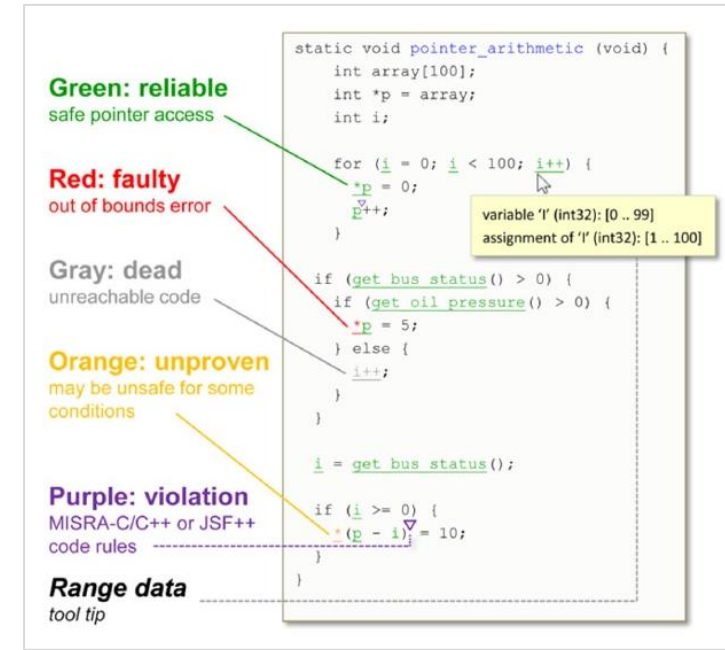
Additional Products (Individual License)

Polyspace

- Proves the absence of critical run-time errors in your embedded C/C++ code using formal methods
- Runs exhaustive checks against coding rules, security standards and code metrics and finds bugs
- Detect coding issues early in your development process

Roadrunner

- An interactive editor that lets you design 3D scenes for simulating and testing automated driving systems
- Customize roadway scenes by creating region-specific road signs and markings
- Allows you to insert signs, signals, guardrails, and road damage, as well as foliage, buildings, and other 3D models



Green: reliable
safe pointer access

Red: faulty
out of bounds error

Gray: dead
unreachable code

Orange: unproven
may be unsafe for some conditions

Purple: violation
MISRA-C/C++ or JSF++ code rules

Range data
tool tip

```

static void pointer_arithmetic (void) {
    int array[100];
    int *p = array;
    int i;

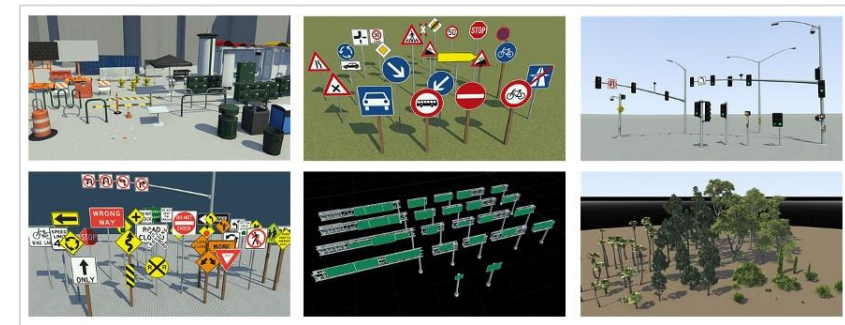
    for (i = 0; i < 100; i++) {
        *p = 0;
        p++;
    }

    if (get_bus_status() > 0) {
        if (get_oil_pressure() > 0) {
            *p = 5;
        } else {
            i++;
        }
    }

    i = get_bus_status();

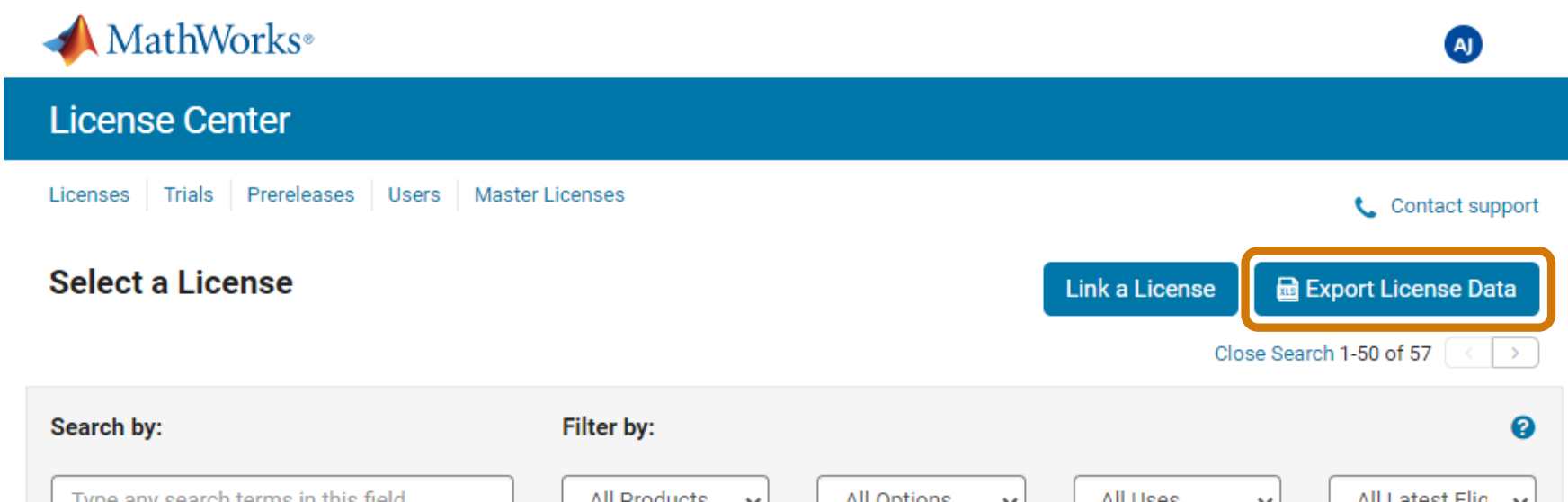
    if (i >= 0) {
        *(p - i) = 10;
    }
}
    
```

variable 'i' (int32): [0 .. 99]
assignment of 'i' (int32): [1 .. 100]



Reports

- Access reports in the License Center by clicking **Export License Data**.
- Track license adoption with the **Active End Users** report.



The screenshot displays the MathWorks License Center interface. At the top left is the MathWorks logo. Below it is a blue header bar with the text "License Center". A navigation menu includes "Licenses", "Trials", "Prereleases", "Users", and "Master Licenses". On the right side, there is a "Contact support" link. The main content area features a "Select a License" section with two buttons: "Link a License" and "Export License Data". The "Export License Data" button is highlighted with an orange border. Below this section, there is a search and filter area with a search bar, a "Filter by:" dropdown menu, and a "Close Search 1-50 of 57" button.

Useful Links

- [How do I contact Installation Support?](#)
- [How do I access the Campus-Wide Quick Start Guide?](#)
- [How can I configure my firewall to use my Campus-Wide License?](#)
- [How do I change the Administrators on my License?](#)
- [What is Login Named User and how can I use it?](#)
- [How do I install additional toolboxes into an existing installation of MATLAB?](#)
- [How do I install the Network License Manager?](#)